



RhinoMeiah®

High Pressure Laminate (HPL)



RhinoMeiah® high-pressure decorative plastic laminate is produced in accordance with the European standard EN 438 Class W2. Rhino finds it's an ideal application in floors for which high surface wear is necessary, and finds it's the best use in the construction of access floors which can be installed on all types of floor, whether old or new. The surface of Rhino Meiah® HPL is non-toxic, chemically inert and non-allergenic.

RHINO®
Strive for perfection!

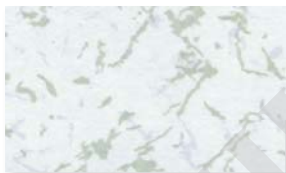
Description

RhinoMeiah® high-pressure decorative plastic laminate is produced in accordance with the European standard EN 438 Class W2. Rhino finds it's an ideal application in floors for which high surface wear is necessary, and finds it's the best use in the construction of access floors which can be installed on all types of floor, whether old or new. The surface of Rhino Meiah® HPL is non-toxic, chemically inert and non-allergenic.



Performance

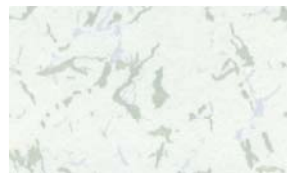
- Special anti-static properties
- Excellent resistance to wear and tear
- Excellent resistance to scratching
- Excellent resistance to impact
- Excellent resistance to damp and static load resistance
- Excellent resistance to high temperatures, including those of cigarette burns
- Excellent reaction to fire with low fume-generation
- Particular resistance to chemical products and cleaning agents, including organic solvents
- Easy to clean and maintenance
- Good dimensional stability



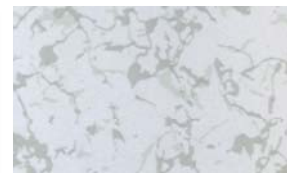
Meian® 2010



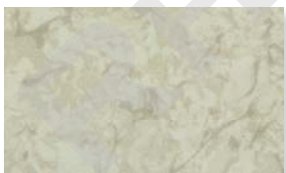
Meian® 2010-1



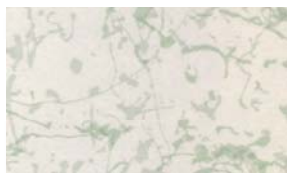
Meian® 2010-2



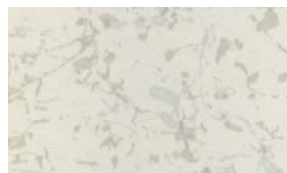
Meian® 2010-4



Meian® 2010-5



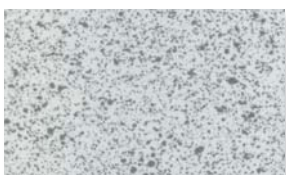
Meian® 2010-6



Meian® 2010-7



Meian® 2010-8



Meian® 2103



Meian® 2158



Meian® 2069



Meian® 2208

	Specification	Test Standard	Rhino Meiah® Anti-static High Pressure Laminate
FLOOR CLASSIFICATION	Type of Floor Covering	EN649	Anti-static HPL
		ASTM F 1700	Class III - Type B, High Pressure Laminate
		NFPA Life sfty code 101	Class 1 - Interior Floor Finish
		NFPA 99 Standard for health care facility	Meets Standard
	Floor Classification (Wear rating / Static load resistance)	EN 685	Commercial: 34 / Industrial: 43
	No of Color		12
PHYSICAL FEATURES	Tile Dimension Size	EN 427 90° Press Cutting	600x600 / 610x610
		ASTM F 536: Size Tolerance (<±0.4mm / 305mm)	< ±0.4mm / 305mm
	Dimensional Stability	EN 434 /FED STD NO. 501a, M 6211	< 0.25%
		ASTM F 540: Square Tolerance (<0.51mm / 305mm)	< 0.51mm / 305mm
	Wear Layer Thickness	EN 429	0.30mm
	Inter Layer		Print film
	Total Thickness	EN 428	Metric: 1.2mm / 2.0mm English: 1/16"(1.6mm) / 1/8"(3.2mm)
		ASTM F 386: Thickness Tolerance (±0.13mm)	Meets Standard
	Weight / m²	EN 430	1.2mm: 1.5 kg/m²; 2.0mm: 2.5 kg/m² 1.6mm: 1.8 kg/m²; 3.2mm: 3.6 kg/m²
	Wear Resistance (Abrasion / Thickness Loss)	EN 660-1	< 0.08mm
		EN 649	Group T
		ASTM D 4060 (CS-17 Wheel, 1,000 g, 1,000 cycles)	70mg
	Hardness	ASTM D 2240 (Type D)	67
	Residual indentation	EN 433 / Din 51955	<0.04mm
		ASTM F 1914 (<8%)	<8%
	Static Load Limit	ASTM F 970	3,000 lbs/square inch; Long term
	Flexibility	ASTM F 137	No Crack or Breaking
Castors Wheel test	EN 425	No Damage	
ELECTRICAL FEATURES	Electrical Resistance	DIN 51953 / EN 1081	Anti-static 10 ⁹ < R < 10 ¹²
		ASTM F 150 / ESD F 7.1 / UL 779	Anti-static 1.0x10 ⁹ ~ 1.0x10 ¹²
FIRE RESISTANCE	Critical Radiant Flux	ASTM E 648 / NFPA 253	Class 1 (1.08 w/cm²)
	Flame Spread	ASTM E 162 / ASTM E 84 / NFPA 225	NFPA Class B / UBC Class II (<75)
	Smoke Density	ASTM E 662 / NFPA 258	Passed (<450Dme)
	Thermal Conductivity	DIN 52612 / NFX 10021	0.309 w/m.k
	Underfloor Heating	DIN 52612	Suitable - Max 30°C
ASTM F 1514 (ΔE < 8 ave, max)		< ΔE = 8.0	
CHEMICAL RESISTANCE	Chemical Resistance	EN 423 / DIN 51958	Excellent; Test Report available on request
		ASTM D 543 / ASTM F 925	Excellent; Test Report available on request
SLIP RESISTANCE	Slip Resistance	Wet	
		DIN 51130 / BGR181 (ZH1 / 571)	R9
		ADA Requirements	> 0.6
	prEN 13893	0.89 μ	
	Dry	EN 13893	> 0.3
LIGHT RESISTANCE	Color Fastness	EN 20105-B 02	> 6
		ISO 105 B 02, Met. 3 - DIN53389	7
	Resistance to Light	ASTM F 1515 (ΔE<8 ave, max)	< ΔE = 8.0
OTHER PROPERTIES	Impact Sound Reduction	ISO 717 / 2	4 dB
	Sound Absorption	ISO 140-8 / ISO 717	3 dB
	Water Absorption	ASTM D 570	0.03% water weight gain
	Ease of Decontamination	DIN 25415-1 / ISO 8690	Excellent
	Recyclable		Yes
	Formulation		High Pressure Laminate Static Control HPL

RHINO[®]

Strive for perfection!

China Office

593, Tongjiang Road
Jintian Plaza 828-830
Changzhou 213022
Jiangsu, China

T/ (86) 519 8988 3171

F/ (86) 519 8988 3901

Bangkok Office

32 Soi Sukhumvit 36 (Napasub)
Sukhumvit Road, Klongton
Klongtoey, Bangkok 10110
Thailand

T/ (662) 661 2990

F/ (662) 661 2991

Hong Kong Office

7/F, Spa Centre
No. 53-55 Lockhart Road
Wai Chai
Hong Kong

T/ (852) 2793 5511

F/ (852) 3590 2333

Production Unit

Hengshanqiao
Wujin District
Changzhou 213119
Jiangsu, China

T/ (86) 519 8860 7959

F/ (86) 519 8860 5659

www.RhinoAccessFloors.com